

---

# VVDI2 – Overview

VVDI

# Table of Contents

1. Document Declaration.....	3
2. Safety Precautions and Warnings.....	4
3. Hardware Overview.....	5
3.1. Specifications.....	5
3.2. System Requirements .....	6
3.3. Tool Description.....	7
4. Software Overview .....	8
4.1. Overview.....	8
4.2. Auto detect transponder.....	10
4.3. Remote frequency test.....	10
4.4. VVDI2 – Quick Start tool.....	10
4.5. VVDI2 – VAG software .....	11
4.6. VVDI2 – BWM software .....	19
4.7. VVDI2 – Porsche software .....	22
4.8. VVDI2 – Transponder Programmer software .....	23
4.9. VVDI2 – PassThru J2534 Configuration software .....	29
4.10. VVDI2 – Online Update Tool.....	30

# 1.Document Declaration

Please view the following declaration carefully:

- ◆ VVDI2 – Overview can help you learn how to use VVDI2 device. **Please DON'T used for illegal purpose, Please follow the national law**
- ◆ VVDI2 – Overview is written by VVDI2, **please DON'T used for commercial purposes without authorize**
- ◆ VVDI2 – Overview have some associated documents. Mainly following:
  - **VVDI2 – Install Software and Driver**
  - **VVDI2 – VAG User Manual**
  - **VVDI2 – BMW User Manual**
  - **VVDI2 – Porsche User Manual**
  - **VVDI2 – Transponder Programmer User Manual**
  - **VVDI2 – PassThru J2534 User Manual**
  - **VVDI2 – Update Online**
- ◆ **Any illegal use VVDI2 – Overview and its associated documents, illegal use VVDI2 device, The user should take all risks, the company does not assume any responsibility**

**Thank you for choosing VVDI2.**

## 2.Safety Precautions and Warnings

**To prevent personal injury or damage to vehicles and/or the tool, read this instruction manual first and observe the following safety precautions at a minimum whenever working on a vehicle:**

- ◆ Always perform automotive testing in a safe environment
- ◆ Wear safety eye protection that meets ANSI standards
- ◆ Keep clothing, hair, hands, tools, test equipment, etc. away from all moving or hot engine parts
- ◆ Operate the vehicle in a well ventilated work area: Exhaust gases are poisonous
- ◆ Put blocks in front of the drive wheels and never leave the vehicle unattended while running tests
- ◆ Use extreme caution when working around the ignition coil, distributor cap, ignition wires and spark plugs. These components create hazardous voltages when the engine is running
- ◆ Put the transmission in PARK (for automatic transmission) or NEUTRAL (for manual transmission) and make sure the parking brake is engaged
- ◆ Keep a fire extinguisher suitable for gasoline/chemical/electrical fires nearby
- ◆ Don't connect or disconnect any test equipment while the ignition is on or the engine is running
- ◆ Keep the tool dry, clean, free from oil/water or grease. Use a mild detergent on a clean cloth to clean the outside of the scan tool, when necessary

## 3. Hardware Overview

### 3.1. Specifications

ITEM	Description		
Operating Temperature	-20 to 70 °C ( -4 to 158 °F )		
Storage Temperature	-40 to 85 °C ( -40 to 185 °F )		
Diagnostic Interface	16 PIN		
USB Interface	USB 2.0		
Power	DC 5 V - 12 V		
Consumption	1 W		
Dimensions	<b>Length</b>	<b>Width</b>	<b>Height</b>
	146 mm(5.75" )	85mm(3.35" )	38 mm(1.50" )
Packing Dimensions	<b>Length</b>	<b>Width</b>	<b>Height</b>
	227 mm(8.94" )	158 mm(6.22" )	58 mm(2.28" )
Net Weight	240 g		
Gross Weight	610 g		

## 3.2. System Requirements

### PC/Laptop Minimum Specification

	Minimum Specification	Recommended Specification
<b>CPU</b>	Pentium 3/1GHz or above	Pentium 4/1.6GHz or above
<b>Memory(RAM)</b>	512M or above	1G or above
<b>HDD</b>	40G or above	60G or above
<b>Display</b>	800 x 600 or above	1024 x 768 or above
<b>OS</b>	Win98/2000/XP/Vista	WinXP/WIN7
<b>Port</b>	USB	USB

### 3.3. Tool Description



1. VVDI2 device
2. 5<sup>th</sup> BDM Programmer
3. OBD line
4. CAS plug (Extra plug, need buy from dealer)
5. Remote Programmer (Extra plug, need buy from dealer)
6. USB cable

## 4. Software Overview

### 4.1. Overview

- ◆ VVDI2 is a multifunctional automotive diagnostic platform, mainly for automotive maintenance (replace 2nd parts, diagnostics, keys, mileage etc)
- ◆ Support OBD function for VW, Audi, Skoda, Seat, Porsche, Bentley, BMW etc
- ◆ Support many transponders: Read/Write/Copy/Verify etc
- ◆ Support Immobilizer Data Tool and make remote
- ◆ Support Third – Party software, such as ODIS, VAS5054, Techstream, HDS etc
- ◆ VVDI2 device need synchronize with server every 31 days. When you get 1 days in remaining synchronization time, run software, it will synchronize with server automatically, need internet support
- ◆ VVDI2 can update firmware and software online



- ◆ VVDI2 have the following programs accord the main function:
  - Auto detect transponder and Remote frequency test
  - VVDI2 – Quick Start
  - VVDI2 – VAG
  - VVDI2 – BMW
  - VVDI2 – Porsche
  - VVDI2 – Transponder Programmer
  - VVDI2 – PassThru Configuration
  - VVDI2 – Update Online

## 4.2. Auto detect transponder

Very useful function, transponder can be auto detected by VVDI2 from main device. Just input transponder and press button 'T' on VVDI2. You just need provide power to VVDI2

## 4.3. Remote frequency test

Very useful function, remote key's frequency can be auto detected by VVDI2 from main device. Press button 'F' on VVDI2, place remote key on check area and use any button on your remote key

## 4.4. VVDI2 – Quick Start tool

- ◆ In the title you can find Quick Start tool version and Installer version [\(PICTURE 4.1\)](#)
- ◆ Double click the icon function to start programs or view folder
- ◆ Quick start will minimize to system tray after run other programs
- ◆ Quick start will shown to front window after close other VVDI2 programs
- ◆ Double click VVDI2 icon in system tray, it will come to front window
- ◆ ReadMe: Open update information folder
- ◆ User Manual: Open user manual folder
- ◆ Log Files: Open log files folder

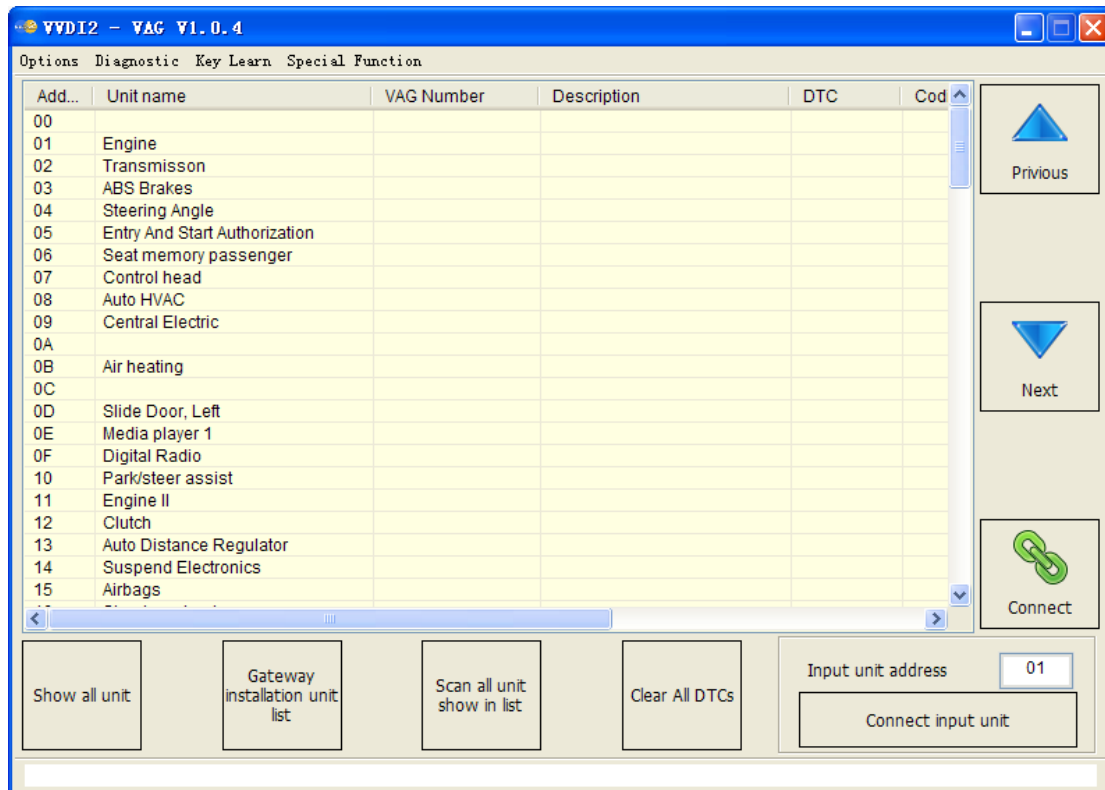


[\(PICTURE 4.1\)](#)

## 4.5. VVDI2 – VAG software

VAG software support VAG cars: VW, Audi, Seat, Skoda, 4<sup>th</sup> immobilizer Porsche, 4<sup>th</sup> immobilizer Bentley (PICTURE 4. 2)

Mainly include: Diagnostic, 4<sup>th</sup> immobilizer, 5<sup>th</sup> immobilizer, key learn, BCM remote control, Engine control unit, Kline instrument and immobox, adapt unit, component protection, dump tool etc. You can find detail in VVDI2 – VAG User Manual



(PICTURE 4. 2)

### ◆ Diagnostic

Support TP2.0, UDS, KWP1281, KWP2000 protocol, have internal database, can display every item in detail

- **Identification:** read the detail information for target unit
- **Coding:** Set unit coding
- **Actuator test:** Test every small actuator in target unit
- **Read DTCs:** Read trouble codes
- **Clear DTCs:** Clear trouble codes
- **Basic settings:** Complete basic settings for target unit
- **Security access:** Login with PIN code, usually use before adaptation
- **Adaptation:** Set new value in channel
- **Custom requests:** You can write your own commands to unit
- **Measured values:** Display useful information from channel
- **Advance measure value:** Display one item information in group (mainly for UDS protocol)

- **ECU Flasher:** Support flash ECU by OBDII, now we support frf, odx, sgo file

## ◆ Key Learn

- **4<sup>th</sup> immobilizer system** – VW/Audi/Skoda/Seat/Porsche/Bentley all have cars with 4<sup>th</sup> immobilizer. For 4<sup>th</sup> immobilizer cluster, support Read/Write EEPROM, Read/Write immodata, change KM, add new key, read START/STOP key data etc
  - 1) Instrument - CDC3217/CDC3297/CDC3272 + 24C2
  - 2) Instrument - NEC+24C32
  - 3) Instrument - NEC+24C64
  - 4) Instrument - NEC+24C64 (2013-)
  - 5) Instrument– NEC+24C64 (2012 TFT color display)
  - 6) Instrument– NEC+24C64 (2013 TFT color display)
  - 7) Instrument– NEC35xx
  - 8) Instrument– NEC+95320
  - 9) Instrument– Motorola 9S12XHZ512(Golf6 MM7 – 2011)
  - 10) Instrument– NEC+95320(Johnson Controls)
  - 11) Instrument– NEC+95320(JCI – 2013 Bora/Jetta)
  - 12) Instrument– Visteon
  - 13) VW Passat B6/B7/CC Key Learn
  - 14) Touareg/Phaeton/A8/Cayenne/Bentley 4<sup>th</sup> immobilizer
  - 15) Audi A1 – NEC+24C64
  - 16) Audi A3/TT/R8 – CDC3217/3297 + 24C32
  - 17) Audi A4 – instrument Crypto RB4 (2001+)
  - 18) Audi A4 –instrument Crypto RB8 (2004+)
  - 19) Audi A6/Q7/Allroad – EZS-Kessy
  - 20) Audi Q3
- **5<sup>th</sup> immobilizer system** – VW/Audi
 

Support following cars: A4(2009- ), A5, Q5, A6 (2012-), A7, A8(2011-), Touareg(2011-)

  - 1) OBD method read BCM2
  - 2) BDM method read BCM2
  - 3) Check key status
  - 4) Make Dealer key
  - 5) Key Learning
- **Key Learn**

Support learn dealer key by OBD for most of the vehicles (Auto detect type is supported). Supports following types:

  - 1) Audi A4/A6 (immobilizer box) -1997 - KWP1281
  - 2) Audi A8 (immobilizer box) -1999 - KWP1281
  - 3) Audi A2/A3/A6/TT/Allroad 1997+ - KWP1281
  - 4) Audi A4 1997-2002 - KWP1281

- 5) Audi A4 2002+ - KWP2000
- 6) Audi A8 1999-2002 - KWP1281
- 7) Audi A3 - CAN
- 8) Audi A6/Q7/Allroad 2005+ - CAN (**Support OBD lost all key**)
- 9) Seat Altea -2007 - CAN
- 10) Seat Cordoba
- 11) Seat Ibiza (immobilizer box) -1999 - KWP1281
- 12) Seat Ibiza 1999+
- 13) Seat Leon - KWP1281
- 14) Seat Leon -2007 - CAN
- 15) Seat Toledo - KWP1281
- 16) Seat Toledo -2007 - CAN
- 17) Skoda Octavia - KWP1281
- 18) Skoda Octavia II -2007 - CAN
- 19) Skoda Octavia II 2007+ - CAN
- 20) Skoda Superb - KWP1281
- 21) Skoda Roomster - KWP1281
- 22) Skoda Scout -2007 - CAN
- 23) Skoda Fabia (immobilizer box) -1999 - KWP1281
- 24) Skoda Fabia 1999+ - KWP1281
- 25) VAG (immobilizer box) - KWP1281
- 26) VAG KWP1281 Immobilizer - KWP1281
- 27) VAG KWP2000 Immobilizer - KWP2000
- 28) VW Polo (PCF7935 transponder) - KWP1281
- 29) VW Touareg/Phaeton/Bentley/Cyenne Kline - KWP2000
- 30) Audi A8 - CAN
- 31) VW, Seat, Skoda -2007 - CAN
- 32) Porsche Cayenne CAN - CAN
- 33) VW Passat B6/CC – CAN (**Support OBD lost all key**)
- 34) VW Passat B6/CC with EDC17/MED17 – CAN (**Support OBD lost all key**)
- 35) VW Golf V with Visteon dash
- 36) Audi A4 (RB8 Instrument Cluster) 2004+ - KWP2000
- 37) VW, Seat, Skoda 2007+ - CAN (**Support OBD lost all key**)
- 38) VW, Seat, Skoda, Audi with VDO NEC 2009+ - UDS (**Support OBD lost all key**)
- 39) Lamborghini Gallardo -2005
- 40) Lamborghini Gallardo 2005+
- 41) VW with NEC+95320 or Magneti Marelli with Motorola 9S12 2009+ - UDS (**Support OBD lost all key**)
- 42) Immobilizer box use Megamos - KWP1281
- 43) New Beetle - KWP2000
- 44) Johnson Controls with 95320 - UDS (**Support OBD lost all key**)
- 45) VW Dashboard with VDO NEC35xx 2013+ - UDS (**Support OBD lost all key**)

➤ **Remote Key Adaptation**

Support adapt remote key with 09 unit (**BCM system and BFM system**) (4<sup>th</sup> immobilizer – UDS dashboard)

◆ **Special Function**

➤ **Engine Control Unit**

OBD operation: read PIN, CS, MAC, change KM, switch OFF/ON immo, read flash. Also VVDI2 provide auto detect function. Supports following types:

- 1) ME7.1.1/7.5/7.8 master
- 2) ME7.1.1/7.5/7.8 slaver
- 3) MED17
- 4) MED 9.1 single
- 5) MED 9.1 master
- 6) MED 9.1 slaver
- 7) MED 9.5.10
- 8) EDC15x
- 9) EDC16U1
- 10) EDC16U1 master
- 11) EDC16U1 slaver
- 12) EDC16U31
- 13) EDC16U31 master
- 14) EDC16U31 slaver
- 15) EDC16U34
- 16) EDC16CP/EDC16CP34
- 17) EDC16CP34 master
- 18) EDC16CP34 slaver
- 19) EDC16C4 master
- 20) EDC16C4 slaver
- 21) EDC17
- 22) SIMOS PPD 1.1/1.5(Siemens)
- 23) SIMOS benzin(Siemens)
- 24) Porsche 5.2/7.8

➤ **K-Line Instrument/Immobox**

OBD operation: Read pin code from Kline cluster and immobox, Read/Write EEPROM, change KM etc

Supports following types:

- 1) Instrument Cluster(VDO66,VDO86, Motometer)
- 2) VW LT immobilizer box
- 3) VW Gol immobilizer box
- 4) White immobilizer box - Audi A4/A6/A8
- 5) Black immobilizer box Siemens 6 PINs HC05 (Immo1)
- 6) Black immobilizer box Siemens 6 PINs HC05 - 2400 (Immo1)
- 7) Black immobilizer box Siemens 6 PINs TMS (Immo1)

- 8) Instrument Cluster - Audi A4 B5 with Board Computer (-1997)
- 9) Instrument Cluster - Audi A4 B5 without Board Computer (-1997)
- 10) Instrument Cluster - Audi A8 (-10.1996)
- 11) Instrument Cluster - Audi A8 (11.1996-)
- 12) Instrument Cluster - Audi A6 B45 (-1997)
- 13) Instrument Cluster - Magneti Mareli - Shadow 1
- 14) Instrument Cluster - Magneti Mareli - Shadow 2 (Passat)
- 15) Instrument Cluster - Magneti Mareli - Shadow 3 (TT)
- 16) Instrument Cluster - Magneti Mareli - Direct 1996-2000
- 17) Instrument Cluster - Magneti Mareli - Direct 2000-
- 18) Instrument Cluster - Sharan/Galaxy (-2000)
- 19) Instrument Cluster - Audi A4 BOSCH RB4 Crypto 2001+
- 20) Instrument Cluster - VW Golf 4 BOSCH RBx
- 21) Instrument Cluster - Audi A4 BOSCH RBx
- 22) VW Phaeton/Touareg, Bentley Continental, Porsche Cayenne
- 23) Instrument Cluster - Audi A4 BOSCH RB8 Crypto 2004+
- 24) Instrument Cluster - Lamborghini Gallardo -2005
- 25) Instrument Cluster - Lamborghini Gallardo 2005+

➤ **Change KM**

(4<sup>th</sup> immobilizer UDS cluster enter 4<sup>th</sup> immobilizer for change KM, Kline cluster enter Kline cluster and immobox change KM)

Supports following types:

- 1) CAN Instrument - A4(2009-)/A5/Q5
- 2) CAN Instrument - A6/Q7/Allroad (-2011)
- 3) CAN Instrument - A8 (2003-2011)
- 4) CAN Instrument – Touareg/Phaeton (2007-2010)
- 5) CAN Instrument – VW Touareg(2010-)/Audi A6(2012-),A7, A8(2011-)
- 6) CAN Instrument– VW Lavida(China)1.6, 2.0 (NEC+24C08)
- 7) K-Line Instrument– Touareg/Phaeton (-2007)

➤ **Adapt Unit**

This can adapt 2<sup>nd</sup> unit to new car, synchronization ECU with immobilizer.

Supports following types:

- 1) ECU (EDC16/EDC17/MED9/MED17/Simos) – 4<sup>th</sup> immobilizer ECU
- 2) Kessy Audi A8, VW Touareg/Phaeton
- 3) Passat B6 /CC Comfort module
- 4) A6/Q7/Allroad Transmission gearbox
- 5) Electrical Steering Colum Lock(PQ35)
- 6) A6/Q7/Allroad EZS-Kessy

➤ **Component protection**

- 1) Generation 1
  - a) Audi A6/Q7 (2004-2009) - 07 - Control Head (MMI)



- b) Audi A6/Q7 (2004-2009) - 09 - Central electric (ILM Fahrer)
  - c) Audi A6/Q7 (2004-2009) - 0E - Media Player 1 (MP3 CD Changer)
  - d) Audi A6/Q7 (2004-2009) - 18 - Auxilary Heater
  - e) Audi A6/Q7 (2004-2009) - 46 - ILM Front passenger (ILM Beifahrer)
  - f) Audi A6/Q7 (2004-2009) - 06 - Seat Memory Passenger
  - g) Audi A6/Q7 (2004-2009) - 36 - Memory module (Driver's seat)
  - h) Audi A8 (2003-2006) - 17 - Instrument Cluster
  - i) Audi A8 (2003-2010) - 06 - Seat Memory Passenger
  - j) Audi A8 (2003-2010) - 36 - Memory module (Driver's seat)
  - k) Audi A8 (2003-2010) - 47 - DSP Bang & Olufsen
- 2) Generation 2 – Audi A6/Q7/Allroad other control unit, Audi A4/A5/Q5 control unit
- Support following modules: Entry And Start Authorization, Airbags, Instruments, Central Electric, Central Comfort Module, Seat Memory Driver, Auto HVAC, Auxiliary heater, Seat memory passenger, Sound System, Control head, Information Electric, Radio etc

➤ **EEPROM dump tool**

Support decode ECU EEPROM, Kessy module, J518 module, comfort module, change KM for cluster EEPROM dump

ECU EEPROM: decode PIN, CS, MAC, set new PIN, CS, MAC values

Immobox EEPROM: Kessy module(93C86), J518 module, comfort module, decode PIN, CS, Immo NO., VIN etc

Cluster and immobox EEPROM: decode PIN, KM, and change KM

Support following types:

- 1) IMMO - KESSY - Audi A8, VW Touareg, VW Phaeton, Porsche Cayenne, Bentley Continental [93C86]
- 2) EZS-Kessy Security access code / component protection data [9S12]
- 3) Passat B6 Comfort module component protection data [95320]
- 4) ECU Magneti Marelli(MM7GV, used in part NEC35xx type) PIN and component protection data [95320]
- 5) ECU EDC16 Set component protection data [95320]
- 6) ECU EDC16 Immo bypass [95320]
- 7) ECU EDC16 Mileage calculator [95320]
- 8) ECU EDC16 Security access code / Checksum calculator [95320]
- 9) ECU EDC16 Speed Limiter [95320]
- 10) ECU EDC16 Make virgin [95320]
- 11) ECU MED 9.x Reset component protection data [95160]
- 12) ECU MED 9.x Security Code / Checksum calculator [95160]
- 13) ECU MED 9.x Reset component protection data [95080]
- 14) ECU MED 9.x Security Code / Checksum calculator [95080]
- 15) ECU MED 9.x Reset CRYPTED Login/Component protection
- 16) ECU MED 9.x Reset flash counters
- 17) ECU MED 9.x Immo Bypass



- 18) ECU ME 7.x Set component protection data [9P08/95080]
- 19) ECU ME 7.x Security Code / Checksum calculator [9P08/95080]
- 20) ECU ME 7.x Immo Bypass [9P08/95080]
- 21) ECU EDC15 Immo bypass [24C04]
- 22) Gateway Mileage resetter [95160]
- 23) Steering lock VW Passat 6 Security code [68HC908]
- 24) ECU Simos Benzin - Immo bypass
- 25) ECU Simos 7 - K-line - Login code [93C76] [93C86]
- 26) ECU Simos 7 - CAN - Security Access Code [93C76] [93C86]
- 27) ECU Simos 7 - CAN - Reset component protection data [93C76] [93C86]
- 28) ECU Simos 6.x - Security Access Code
- 29) ECU Simos 6.x - Reset component protection data
- 30) ECU Simos PPD1x - Reset component protection data
- 31) ECU Simos PPD1x - Mileage calculator
- 32) ECU Simos PPD1x - Security Access Code
- 33) ECU Simos 9.1 - Reset component protection data
- 34) ECU Simos 9.1 - Security Access Code
- 35) ECU Simos 9.2 - Reset component protection data
- 36) ECU Simos 9.2 - Security Access Code
- 37) ECU Simos 6.3 - Reset component protection data
- 38) ECU Simos 6.3 - Security Access Code
- 39) ECU Simos 3.3 - Security Access Code and CS bytes
- 40) ECU Magneti Marelli Security Access Code [95320]
- 41) ECU Magneti Marelli - Reset component protection data [95320]
- 42) ECU Magneti Marelli Security Access Code [95080]
- 43) ECU Simos 9.1 (Polo 2007) - Security Access Code
- 44) ECU Bosch M3.x - Immo bypass
- 45) ECU MSA1x - Immo bypass
- 46) IPC VDO VW/Seat/Skoda (2007+) Micronas
- 47) IPC - CRYPTO Skoda Fabia, Skoda Roomster, VW Polo, Seat Ibiza [ 93C86 ]
- 48) Magneti Marelli MM4 Instrument mileage and login code [HC12]
- 49) Audi A3/A4/A6 UKNSI 1995-1997 mileage and login code [93C56]
- 50) Audi A3/A4/A6 UKNSI 1997-1998 mileage and login code [93C56]
- 51) Audi A3/A4/A6 UKNSI Japan mileage and login code [93LC56]
- 52) Audi 100 VDO 1995 mileage [94C46]
- 53) Golf 3 VDO 1995 mileage [93C46]
- 54) Golf 3 VDO V3.9 mileage [93C46]
- 55) Golf 3 Diesel mileage [93C46]
- 56) Golf 3 Motometer V5.8 mileage [93C56]
- 57) Polo Motometer mileage [93C46]
- 58) Polo Motometer 1996 mileage [93C66]
- 59) Passat VDO 1991 mileage [93C56]
- 60) Passat VD202 1993 mileage [93C46]
- 61) Passat GT mileage [93C46]

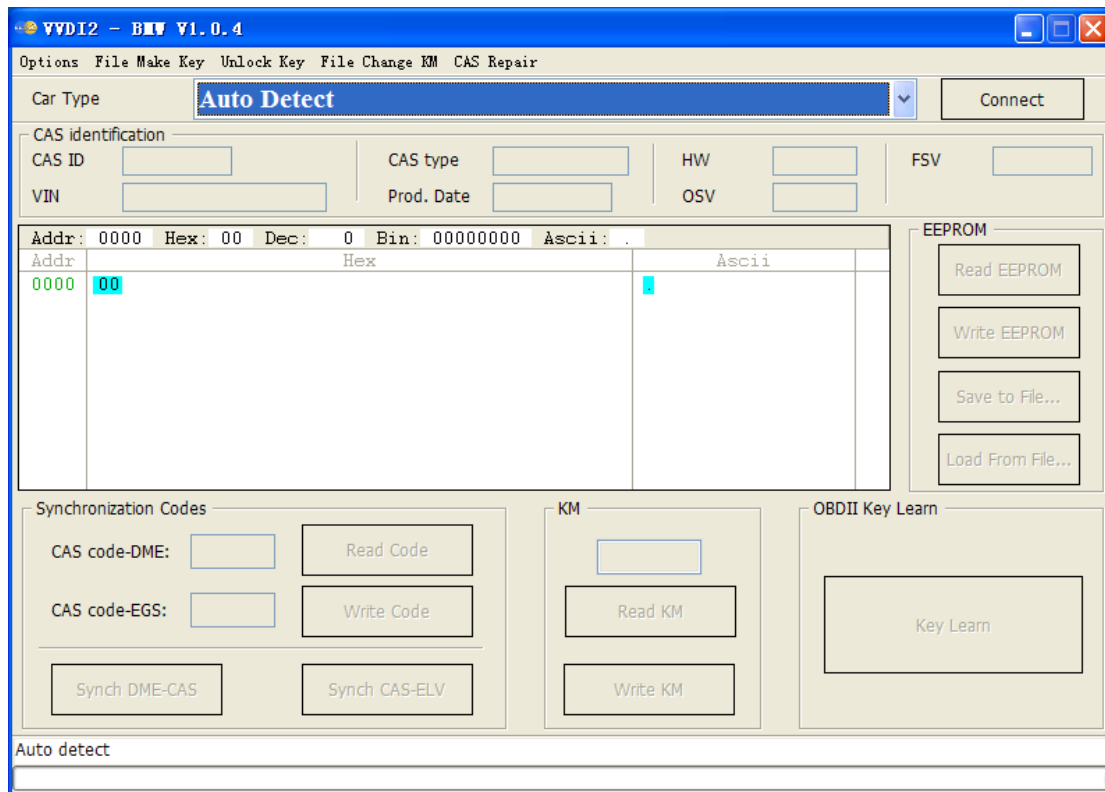
- 62) Passat GT mileage [93C56]
- 63) Caddy mileage [93C56]
- 64) Corrado VDO 1993 mileage [93C46]
- 65) Corrado MotoMeter 1991-1995 mileage [93C56]
- 66) Corrado VDO 1991-1995 mileage [93C56]
- 67) Jetta 1994-1996 mileage [93C46]
- 68) T4 MotoMeter 1996-1997 mileage [93C56]
- 69) Audi A8 (-2002) - Security access code [24c17]
- 70) Audi A8 (-2002) - Mileage calculator [24c17]
- 71) Polo TRW [24c08] - Security access code
- 72) Black immobilizer box VALEO 24C04 - Security access code

VVDI2

## 4.6. VVDI2 – BWM software

BMW software support cars: BMW [\(PICTURE 4. 3\)](#). Support types can be find in [\(PICTURE 4. 4\)](#)

Mainly function: Read/Write EWS, read CAS information, Read/Write CAS EEPROM, Read/Write KM stored in CAS, synchronization DME with CAS, synchronization CAS with ELV, Key Learn(immo), File Make Key, Unlock Key, File Change KM, CAS Repair etc  
**OBD Flash ISTA version only need 10 minutes. (No extra power. No backup CAS EEPROM and FLASH).** You can find detail in VVDI2 – BMW User Manual



[\(PICTURE 4. 3\)](#)

B1V Multi Tool Support Table			○	●	Not Support
System	Function	OBDII	CAS PLUG	Support	EEPROM Dump
EWS1	Change KM	○	○	○	○
	IMMO	○	○	○	●
EWS2	Change KM	○	○	○	○
	IMMO	○	○	○	●
EWS3	Change KM	○	●	●	●
	IMMO	○	●	●	●
EWS4	Change KM	○	●	●	●
	IMMO	○	●	●	●
CAS1(OK50E)	Change KM	●	●	●	●
	IMMO	●	●	●	●
CAS2(2K79X)	Change KM	●	●	●	●
	IMMO	●	●	●	●
CAS3(OL01Y)	Change KM	●	●	●	●
	IMMO	●	●	●	●
CAS3+(OL15Y) (not encrypt)	Change KM	●	●	●	●
	IMMO	●	●	●	●
CAS3+(OL15Y, 0M23S) (encrypt)	Change KM	●	●	●	●
	IMMO	●	○	●	●
CAS4(1L15Y, 5M48H) (not encrypt)	Change KM	○	○	○	●
	IMMO	○	○	○	●
CAS4(5M48H) (encrypt)	Change KM	○	○	○	●
	IMMO	○	○	○	●

(PICTURE 4.4)

### ◆ OBD Function

Support CANBUS100, CANBUS500 and KWP protocol.

- **Diagnostic CAS information**
- **Key Learn**
  - 1) **Get Key Info**
  - 2) **Write Key Info**
  - 3) **Prepare dealer key with programmer (Support CAS1, CAS2, CAS3, CAS3+, ISTAP)**
  - 4) **Prepare dealer key with ignition switch (Support CAS1, CAS2, CAS3, CAS3+, ISTAP)**
  - 5) **Program Key info**
  - 6) **Enable/Disable Key (Support CAS1, CAS3, CAS3, CAS3+, CAS4, CAS4+)**
  - 7) **Clear DTC/Shadow**
- **Read/Write CAS EEPROM**
- **Change KM stored in CAS**
- **Read/Write synchronization codes stored in CAS**
- **Synch DME – CAS**
- **Synch CAS – ELV**
- **Read/Write EWS EEPROM**

### ◆ File Make Key

Support following types:

- **EWS1**
- **EWS2**
- **EWS3**

- EWS4
- CAS1(0K50E)
- CAS2(2K79X)
- CAS3(0L01Y)
- CAS3+(0L15Y/0M23S): Support encrypt version and ISTAP version
- CAS4 (F - Series 1L15Y)
- CAS4 (F - Series 5M48H): Support CAS4 encrypt version

## ◆ File Change KM

Support following types:

- EWS3
- EWS4
- CAS1(0K50E)
- CAS2(2K79X)
- CAS3(0L01Y)
- CAS3+(0L15Y/0M23S)
- CAS4 (1L15Y)
- CAS4 (5M48H)
- M35080(E – Series cluster)
- F - Series cluster

## ◆ Unlock key

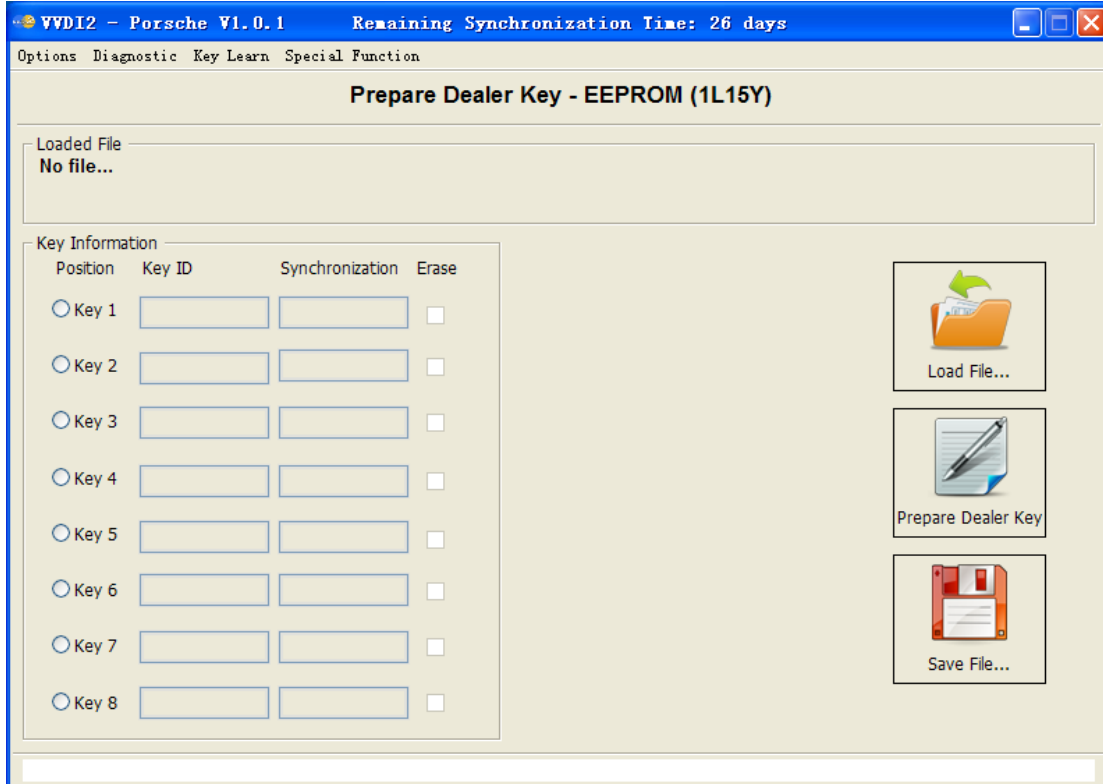
Support unlock key for CAS1/CAS2/CAS3/CAS3+ prepared by VVDI2

## ◆ CAS Repair

- CAS1 Repair (OBDII)
- ISTAP Repair (OBDII)

## 4.7. VVDI2 – Porsche software

Porsche software now only support prepare dealer key with EEPROM support and learn dealer key via OBDII (图 4.5). EEPROM support: 1L15Y, 2M25J, 5M48H, 1N35H etc

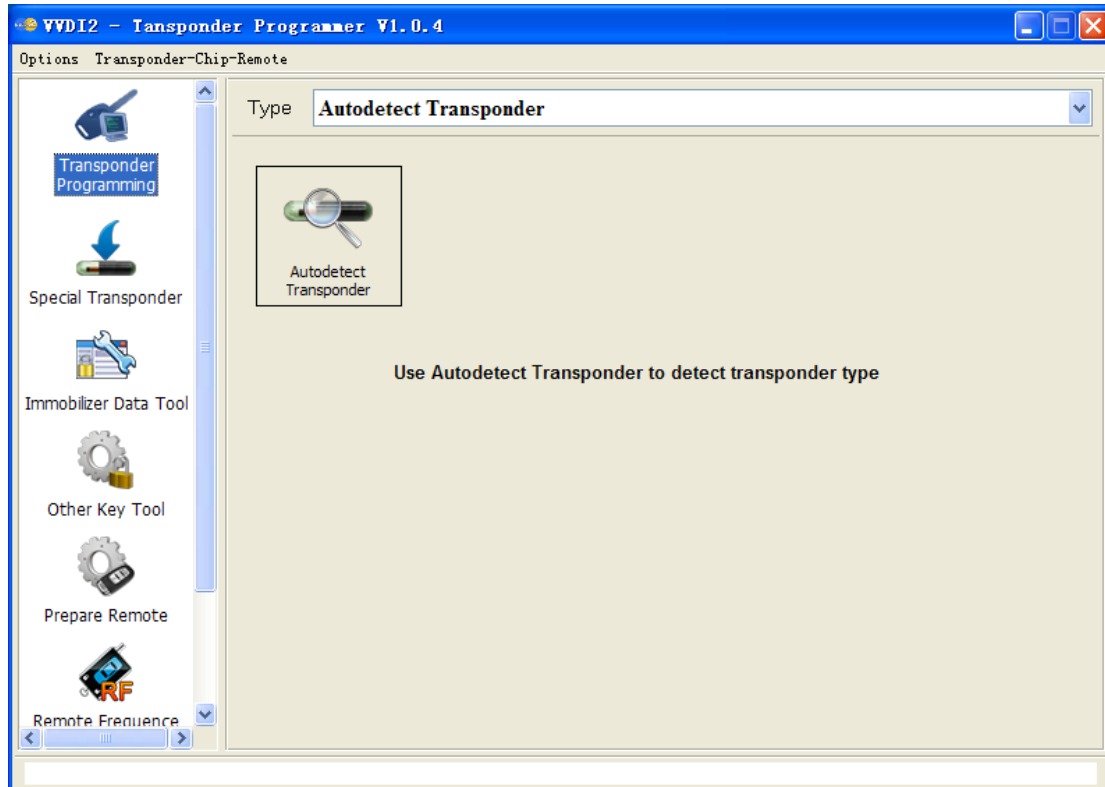


(PICTURE 4.5)

## 4.8. VVDI2 – Transponder Programmer software

Transponder programmer software is a multifunctional immo transponder tool. Mainly include: transponder programming, special transponder, immobilizer data tool, other key data, prepare remote etc (PICTURE 4.6)

You can find detail in VVDI2 – Transponder Programmer User Manual



(PICTURE 4.6)

### ◆ Transponder Programming

Support many type transponder: Read/Write, Verify, Copy etc (Support auto detect function)

Support following types:

- PCF7930/PCF7931/PCF7935
- HITAG2
- HITAG2+ EE
- HITAG2 Extended
- HITAG3
- HITAG Pro
- HITAG (BMW)
- HITAG (VAG)
- MEGAMOS13
- MEGAMOS48
- MEGAMOS8E
- TEMIC 11/TEMIC 12

- TEMIC 8C
- TIRIS 4C
- TIRIS DST 4D/4E
- TIRIS DST+
- T5/TK5551

## ◆ Special Transponder

Special Transponder, it can prepare a special transponder (original manufacture key).

It can be learned to car with PIN code. Support following types:

- TP22 (Seat-CAN) --- Megamos Crypto 48
- TP23 (Volkswagen-CAN) --- Megamos Crypto 48
- TP24 (Skoda-CAN) --- Megamos Crypto 48
- TP25 (Audi-CAN) --- Megamos Crypto 48
- ID33 Citroen/Peugeot/Fiat/Lancia VALEO --- PCF7935
- ID33 Fiat BOSCH --- PCF7935
- ID33 Mazda --- PCF7935
- ID33 Mitsubishi --- PCF7935
- ID33 Nissan --- PCF7935
- ID33 Nissan 2 --- PCF7935
- ID33 Opel/Vauxhall/Cadillac/Holden --- PCF7935
- ID33 Opel/Vauxhall/Cadillac/Holden 2 --- PCF7935
- ID33 Volkswagen --- PCF7935
- ID40(44) China Cars --- PCF7935
- ID40 Opel/Vauxhall/Cadillac/Holden --- PCF7935
- ID41 Nissan --- PCF7935
- ID42 Volkswagen --- PCF7935
- ID44 Mitsubishi --- PCF7935
- ID44 Volkswagen 1 --- PCF7935
- ID44 Volkswagen 2 --- PCF7935
- ID45 Peugeot --- PCF7935
- ID46 China Cars --- PCF7936
- ID46 VAG --- PCF7936
- ID46 Nissan X-Trail
- ID46 Nissan Platina
- ID46 Nissan Keyless --- Key Card
- ID46 Infinity Keyless --- Key Card
- ID46 Nissan Micra --- Remote Key
- ID46 Nissan Tida --- Remote Key
- ID46 Renault Master II --- Remote Key
- ID46 Renault Clio II --- Remote Key
- ID46 Renault Master II --- Transponder 7936
- ID46 Renault Trafic II --- Remote Key
- ID46 Renault Trafic II --- Transponder 7936



- ID46 Nissan Primastar --- Remote Key
- ID46 Nissan Primastar --- Transponder 7936
- ID46 Nissan Interstar --- Remote Key
- ID46 Nissan Interstar --- Transponder 7936
- ID46 Opel Astra H / Zafira B --- Remote Key
- ID46 Opel Corsa D --- Remote Key
- ID46 Opel Vectra C --- Remote Key
- ID46 Opel Vivaro --- Remote Key
- ID46 Opel Vivaro --- Transponder 7936
- ID46 Opel Movano --- Remote Key
- ID46 Opel Movano --- Transponder 7936
- ID46 Opel Movano III --- Remote Key
- ID46 Renault Master III --- Remote Key
- ID46 Renault Clio III --- Remote Key
- ID46 Renault Modus III --- Remote Key
- ID46 Renault Espace IV --- Transponder 7936
- ID46 Renault Espace IV --- Key Card 2-buttons
- ID46 Renault Espace IV --- Key Card 3-buttons
- ID46 Renault Laguna II --- Transponder 7936
- ID46 Renault Laguna II --- Key Card 2-buttons
- ID46 Renault Laguna II --- Key Card 3-buttons
- ID46 Renault Laguna III --- Key Card
- ID46 Renault Vel Satis --- Transponder 7936
- ID46 Renault Vel Satis --- Key Card 2-buttons
- ID46 Renault Vel Satis --- Key Card 3-buttons
- ID46 Renault Megane II --- Key Card
- ID46 Renault Scenic II --- Key Card
- ID46 Renault Twingo --- Remote key
- ID46 Renault Twingo --- Transponder 7936
- ID46 Citroen/Fiat/Lancia/Peugeot --- PCF7936
- ID46 Citroen/Peugeot --- PCF7936
- ID46 Citroen/KIA/Hyundai/Peugeot --- PCF7936
- ID46 Fiat/Iveco --- PCF7936
- ID46 Renault/Chrysler --- PCF7936
- ID46 Chrysler CAN bus (Y164,Y170) --- PCF7936
- ID46 Chevrolet Circle Plus --- PCF7936
- ID46 Mitsubishi --- PCF7936
- ID46 Saab
- ID46 Hyundai Remote key 7946
- ID46 KIA Remote key 7946
- ID60 Generic --- Texas 4D
- ID61 Mitsubishi II --- Texas 4D
- ID62 Suzuki BIKE --- Texas 4D
- ID62 Kawasaki BIKE --- Texas 4D

- ID62 Mitsubishi III --- Texas 4D
- ID63 Ford/Mazda --- Texas 4D
- ID64 Chrysler/Subaru --- Texas 4E
- ID65 Suzuki/Subaru --- Texas 4D
- ID66 Suzuki --- Texas 4D
- ID67 Toyota --- Texas 4D
- ID68 Lexus --- Texas 4D
- ID69 Yamaha --- Texas 4D.(JMA TP31)
- ID70 Toyota Europe --- Texas 4D
- ID70E Toyota Hybrid --- Texas 4D
- ID73 Mitsubishi --- PCF7935
- ID8C Ford/Mazda --- Temic 8C
- ID8C Proton --- Temic 8C
- Mercedes Benz G- Class --- PCF 7930
- Mercedes Benz C- Class/E- Class --- PCF 7930
- Mercedes Benz ML --- PCF 7930
- VW Jetta 2010 (China) --- Megamos Crypto 48

## ◆ Immobilizer Data Tool

Immobilizer Data Tool, simply name write start. It can load car immobox EEPROM dump, make a working key directly. Provide detail transponder type and EEPROM type accord selected car. Support following car types:

- **Asia**
  - 1) Acura
  - 2) Brilliance
  - 3) Besturn
  - 4) Chang An
  - 5) Great Wall
  - 6) Chery
  - 7) Daewoo
  - 8) Daihatsu
  - 9) Geely
  - 10) Haima
  - 11) Honda
  - 12) Hyundai
  - 13) Infiniti
  - 14) Isuzu
  - 15) Kawasaki
  - 16) Kia
  - 17) Lexus
  - 18) Mazda
  - 19) Mitsubishi
  - 20) Nissan

- 21) Proton
- 22) SaicMotor
- 23) Saipa
- 24) IKCO
- 25) SsangYong
- 26) Subaru
- 27) Suzuki
- 28) Tata
- 29) Toyota
- 30) Yamaha

➤ **Euro**

- 1) Alfa Romeo
- 2) Aprilia
- 3) Aston Martin
- 4) Audi
- 5) Bentley
- 6) BMW
- 7) Citroen
- 8) Dacia
- 9) DAF
- 10) Ducati
- 11) Ferrari
- 12) Fiat
- 13) Gilera
- 14) Iveco
- 15) Jaguar
- 16) Lancia
- 17) LDV
- 18) MAN
- 19) Maserati
- 20) Mercedes Benz
- 21) Opel
- 22) Peugeot
- 23) Piaggio
- 24) Polonez
- 25) Porsche
- 26) Renault
- 27) Rover
- 28) Saab
- 29) Scania
- 30) Seat
- 31) Skoda
- 32) Smart
- 33) TagAZ

- 34) UAZ
- 35) VAZ
- 36) Volvo
- 37) VW

➤ **USA**

- 1) Buick
- 2) Bombardier
- 3) Cadillac
- 4) Chevrolet
- 5) Chrysler
- 6) Dodge
- 7) Ford
- 8) GMC
- 9) Jeep
- 10) Lincoln
- 11) Oldsmobile
- 12) Pontiac

◆ **Other Key Tool**

Mainly about unlock key made by VVDI2, find 7<sup>th</sup> byte CS from working key(VAG cars), make dealer key with 7 bytes CS(VAG cars), Change identifier for Megamos 48 transponder (Special transponder) etc

◆ **Prepare remote**

Write special programs to sub-remote-pcb with Remote Programmer; make the sub-remote-pcb have remote function as original new remote key

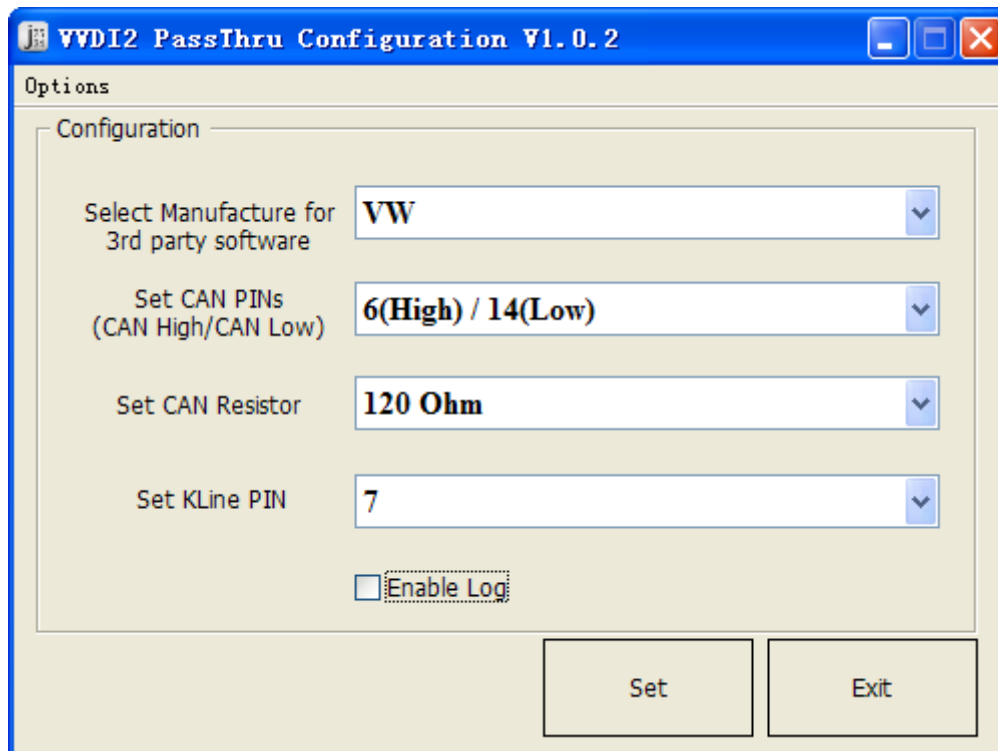
It with offline database, auto update by internet

You can provide your question and bugs here

## 4.9. VVDI2 – PassThru J2534 Configuration software

Support use Third – Party software connect to VVDI2 for communication. Requires the Third – Party software support SAE J2534 function [\(PICTURE 4.7\)](#)

Now we support VAG diagnostics software: OIDS, VAS5054, Other Third – Party software will support in future. You can find detail in VVDI2 – PassThru J2534 User Manual

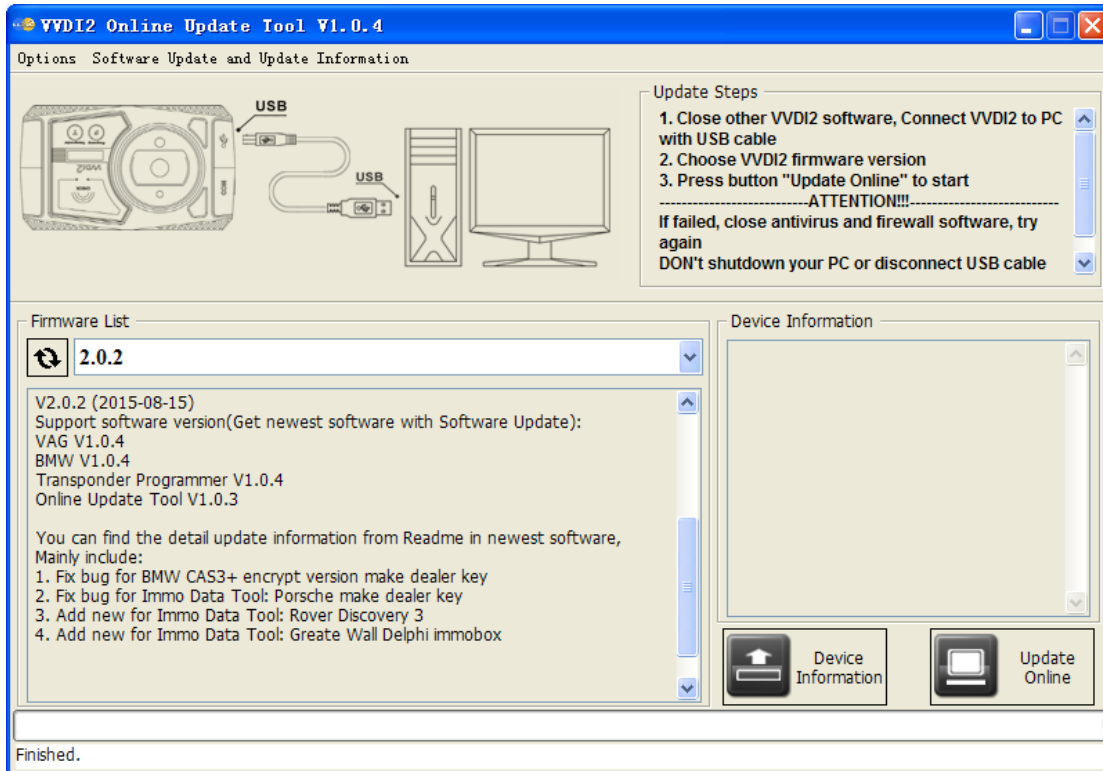


[\(PICTURE 4.7\)](#)

## 4.10. VVDI2 – Online Update Tool

Online Update Tool software can update your VVDI2 to newest firmware and download newest software ([PICTURE 4.8](#))

You can find detail in VVDI2 – Update Online



([PICTURE 4.8](#))

### ◆ Software Update

- Check the latest software and require firmware version
- Download link is provided here, you can download latest software directly
- View latest software update information
- View history update information

### ◆ Device Information

- Read device serial number, firmware version, authorize information etc

### ◆ Update Online

- Choose expect firmware version, online update your VVDI2 device