

1 , Take out those screws for remove the back case and handle from machine xp005L



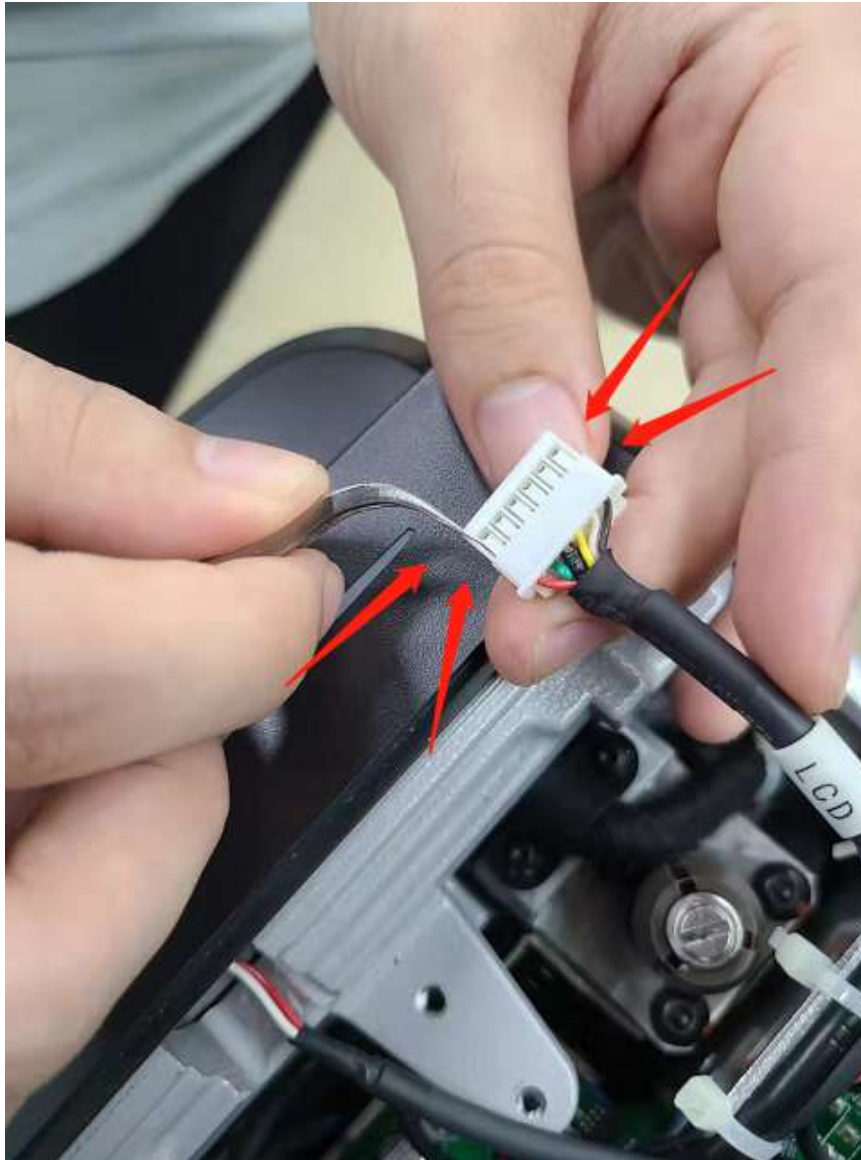
2 , Take out those screws and disconnect cables as picture show , for remove back case from screen



3, Use the flat head screwdriver to push out the mount which use for fix the screen like picture show , for remove screen from the back case of machine xp005L



4, Please remove the plastic pin socket from screen cable with sharp piler like picture show , for remove whole screen and cable from machine xp005L ,



Remark: Please take a photo for that pin socket before you remove it, all pin should be in the exact same position like before when you put it back